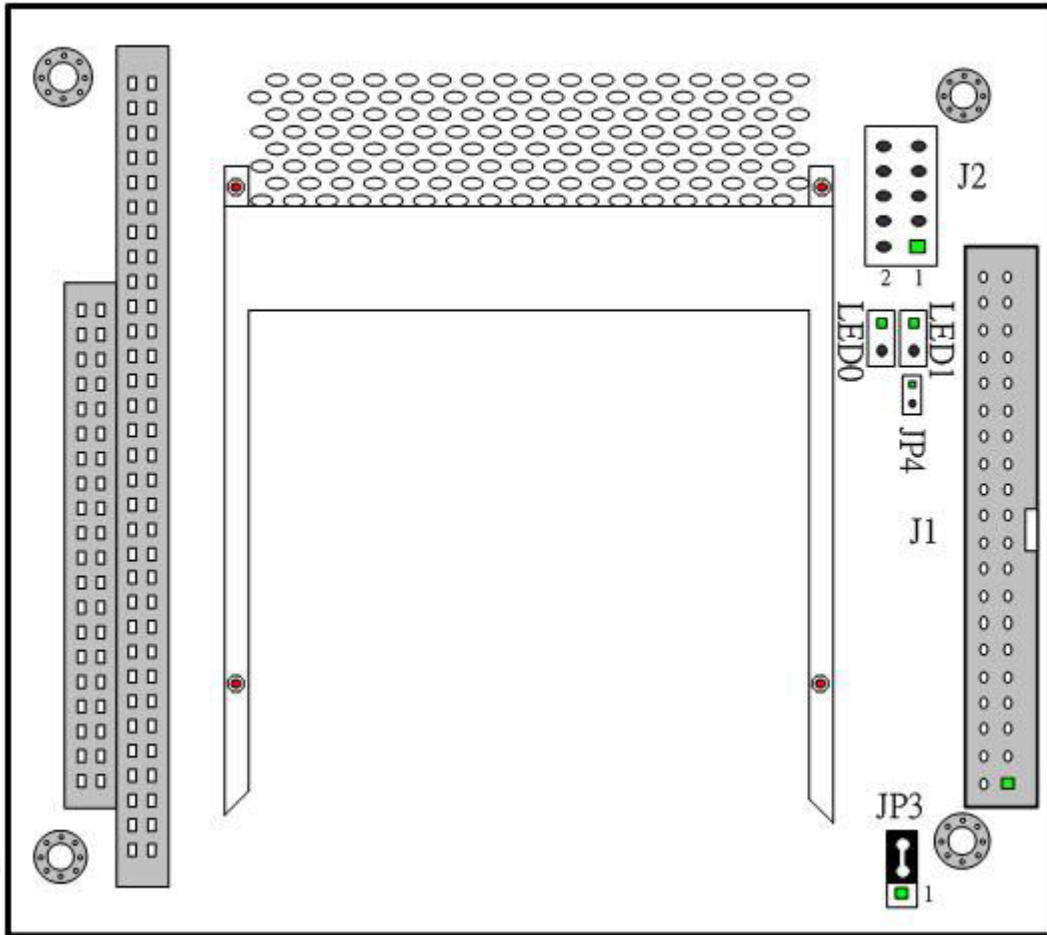


# EX-9893 JUMPER SETTING



## J1: IDE CONNECTOR

PIN	ASSIGNMENT	PIN	ASSIGNMENT
1	RESET	2	GND
3	HD7	4	HD8
5	HD6	6	HD9
7	HD5	8	HD10
9	HD4	10	HD11
11	HD3	12	HD12
13	HD2	14	HD13
15	HD1	16	HD14
17	HD0	18	HD15
19	GND	20	NC
21	DREQ	22	GND
23	IOW	24	GND
25	IOR	26	GND
27	IORDY	28	GND
29	DACK	30	GND
31	IRQ	32	SINGLE GND
33	SA1	34	NC
35	SA0	36	SA2
37	HDCS0	38	HDCS1
39	DASP	40	GND

## J2: LAN CONNECTOR

PIN	ASSIGNMENT	PIN	ASSIGNMENT
1	TX+	2	TX-
3	RX+	4	T45
5	T45	6	RX-
7	GND	8	GND
9	NC	10	NC

## JP3: IDE MASTER OR SLAVE OR CABLE SELECT

1-2 ON: SLAVE

2-3 ON: MASTER

ALL OFF Cable SEL

## **JP4: LAN ENABLED OD DISABLED**

**1-2 ON: DISABLED**

**1-2 OFF: ENABLED**

## **LED1 AND LED2: Link status AND Active Status**

### **1. Link status LED1:**

**When a link window is detected, this LED will light up, showing that the link is good.**

### **2. Active Status LED2:**

**This LED will light up when power ON, and It will flashing at certain time intervals when network at active.**